

PLAN - STAIR  
Scale: 1:10

SYMBOLS AND ABBREVIATIONS:

- DIMENSION REQUIRING VERIFICATION
- VIF - VERIFY IN FIELD
- B.O. - BY OTHERS
- U.O.N. - UNLESS OTHERWISE NOTED
- GWB - GYPSUM WALL BOARD
- SIM. - SIMILAR
- T.B.C. - TO BE CONFIRMED

MATERIAL HATCHES:

- BRONZE/BRASS
- STEEL
- ALUMINUM
- CONCRETE
- GLASS

DRAWING NOTES:

- SCOPE OF WORK:
- FABRICATION & INSTALLATION OF PAVILION RESTAURANT STAIRCASE (STONE BY OTHERS)

- DRAWINGS IN THIS SET:
- 54565-01 (GA)
  - 54565-02 (ELEVATION & SECTIONS)
  - 54565-03 (DETAILS)
  - 54565-04 (A.X.O. RENDERING - STEEL ONLY)
  - 54565-04 (A.X.O. RENDERING - WITH STONE CLADDING)

- BASED ON SOURCE DRAWINGS:
- 

MATERIALS:

- MILD STEEL
- 12mm THK ROLLED & LASER CUT STRINGERS
  - 10X22mm FLT STRINGER INFILLS
  - 6mm THK LASER CUT SLOT & TAB TREAD TREADS
  - 100X100x6mm SHS STRINGER SUPPORT POSTS

- GLASS
- 12mm THK LOW IRON TOUGHENED & LAMINATED GLASS

FITTINGS/HARDWARE

FINISH:

LAYOUT NOTES

- In respect to all trades involved, we've used CHAHAN's layout of the flooring and paneling and only adjusted the actual stair footprint as needed.
- Kikler Projects has advised Elite Metal Group that the geometry in our stair drawings will provide/co-ordinate a general layout of the finished faces/edges only to be used by the following trades to make their design to suit. It is expected all following trades will maintain responsibility for their design.
- Elite Metal Group will advise at the earliest opportunity possible to Kikler Projects, and in turn following trades, of any dimensional deviation from the finished faces/edges represented in our drawings/3D model.
- Elite Metal group will not bare any responsibility for the effects on other trades, of any dimensional deviations of installed staircase which is within tolerances allowable according to project specification. It is strongly suggested all dimensions are confirmed on site, prior to proceeding with manufacture of any proceeding trade's work.
- The centrelines crossing the elliptical flooring pattern are as drawn by CHAHAN and have since been adopted by Kikler to co-ordinate all aspects of the alcove layout.
- The drawings with this note are draft work-in-progress drawings and as such are subject to change. All design co-ordination should be from the latest approved construction issue drawings. Please check with Kikler Projects for the latest issue drawings.

REVISIONS

REV.	DATE	DESCRIPTION
A	17/1/23	• SITE SURVEY ADJUSTMENTS • ADDED TREAD • UPDATED RISE
B	1/2/23	• ADDED STRUCTURAL STEEL • ADJUSTED 1ST FLOOR LANDING
C	6/2/23	• SHIFTED CENTRELINE • ADDED 1ST FLOOR TERMINATIONS

Drawings Issued For:

**Fabrication**

Project Name

Project Scope

Drawing Number

**54565-01**  
(of 5 sheets)

Drawing Title

**RESTAURANT STAIRCASE**

GA

Date

12/12/22

Drawn By

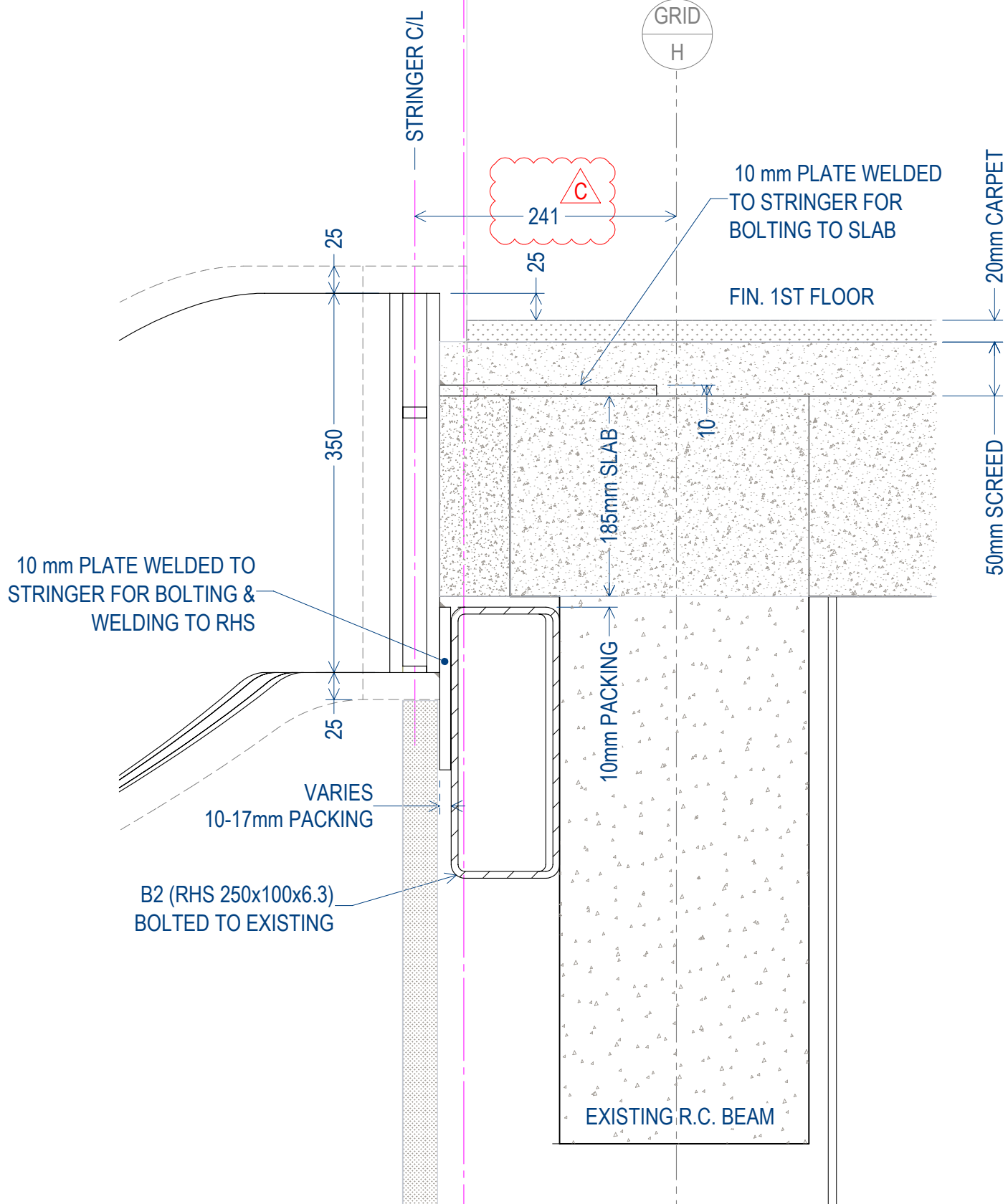
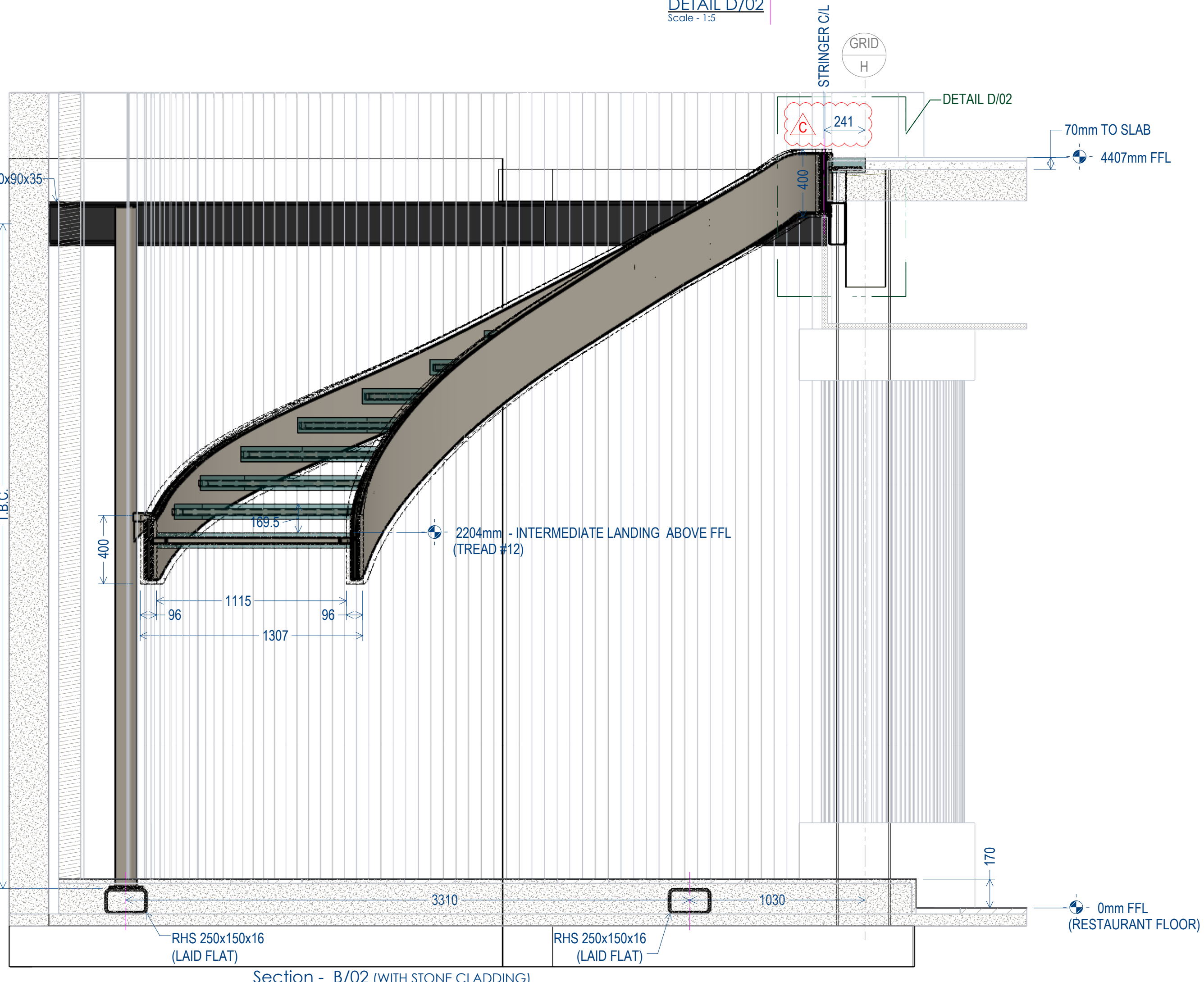
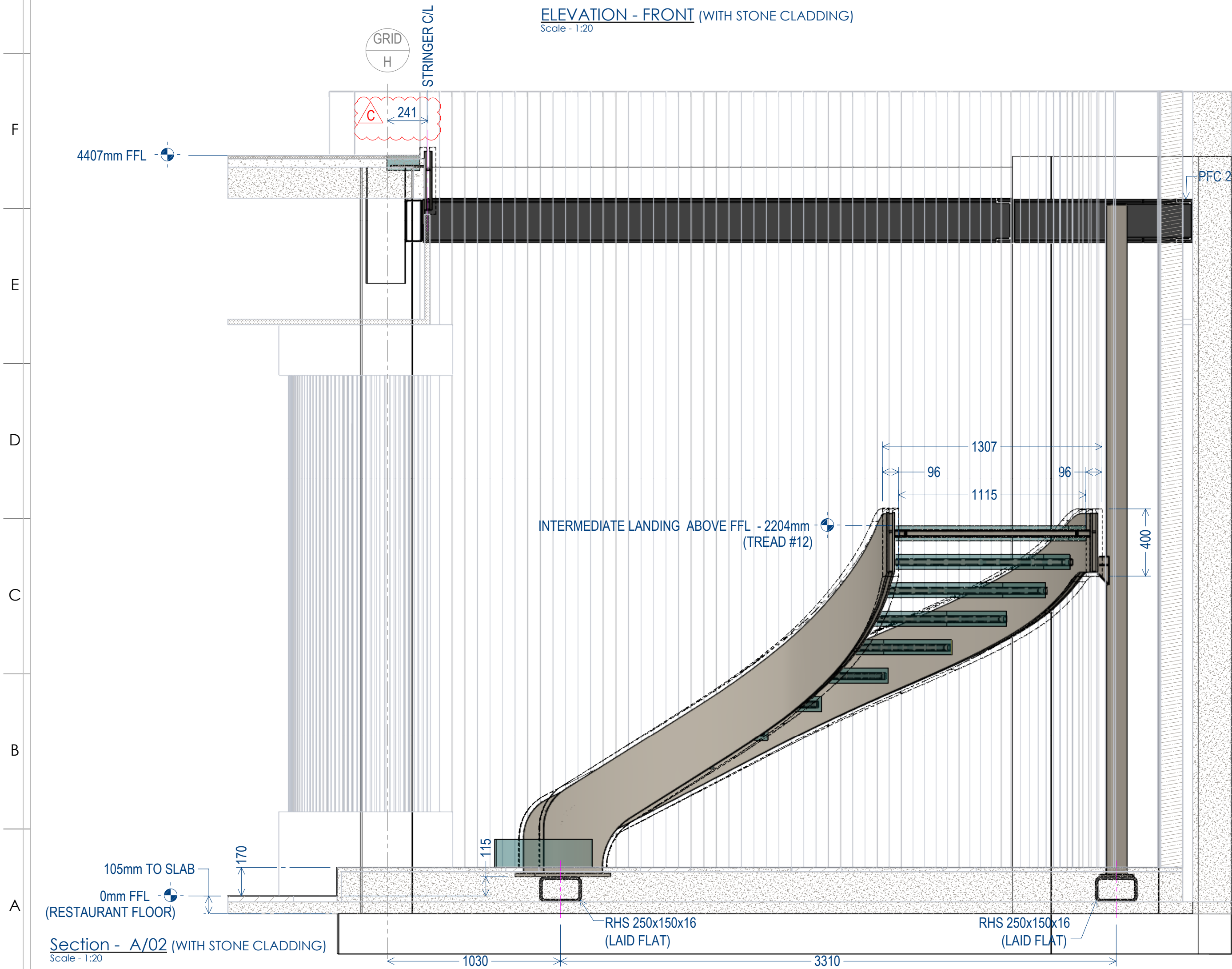
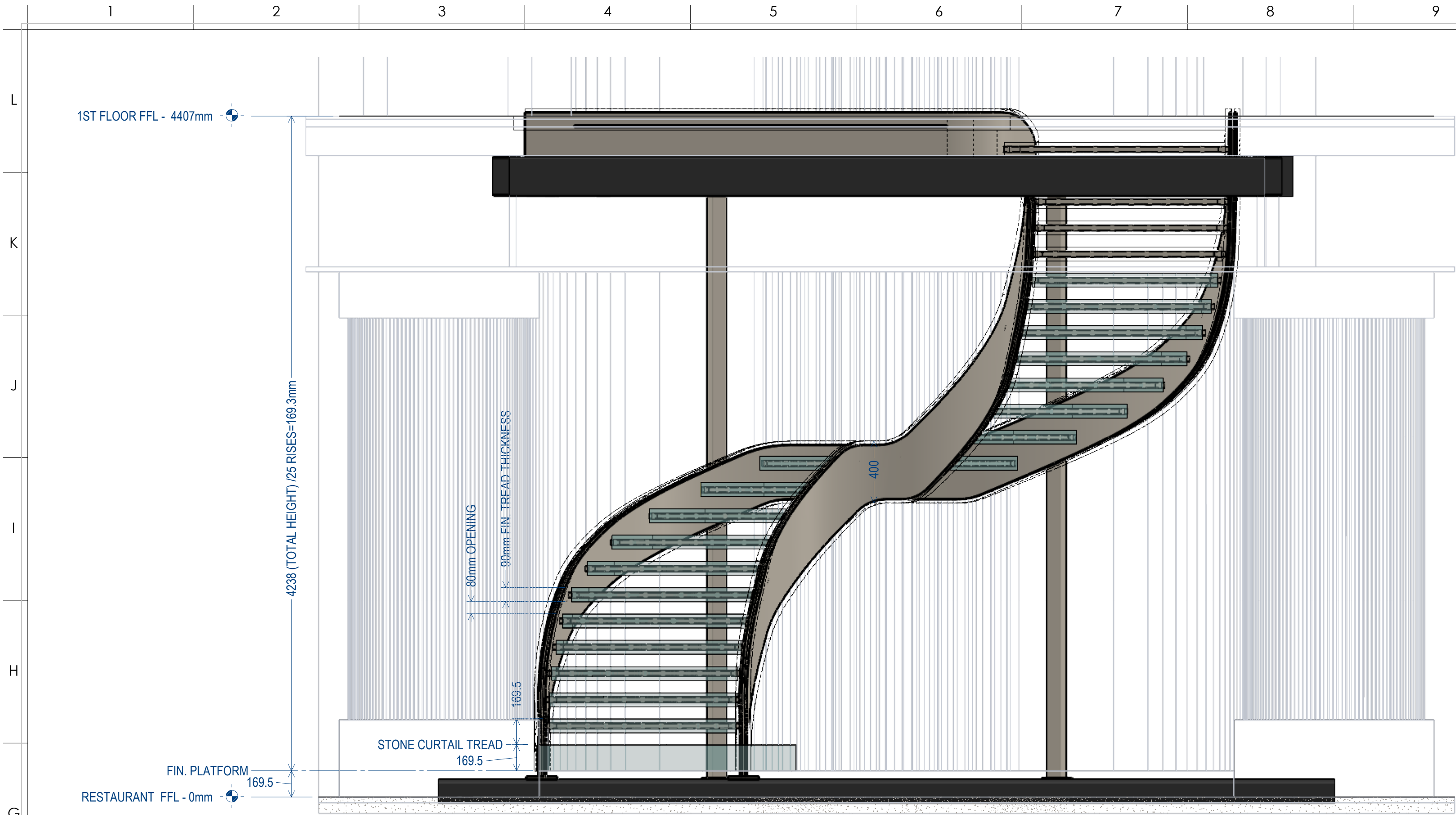
RC

Page Size

A1

Drawings generated in SolidWorks® by Shoreline Parametrics  
+44 (0)179 838006 (UK)  
+01 (603) 651-0891 (US)  
info@shorelineparametrics.com





#### SYMBOLS AND ABBREVIATIONS:

◀ ## ▶ - DIMENSION REQUIRING VERIFICATION

VIF - VERIFY IN FIELD

B.O. - BY OTHERS

U.O.N. - UNLESS OTHERWISE NOTED

GWB - GYPSUM WALL BOARD

SIM. - SIMILAR

T.B.C. - TO BE CONFIRMED

#### MATERIAL HATCHES:

▨ - BRONZE/BRASS

▨ - STEEL

▨ - ALUMINUM

▨ - CONCRETE

▨ - GLASS

#### DRAWING NOTES:

SCOPE OF WORK:  
• FABRICATION & INSTALLATION OF  
PAVILLION RESTAURANT STAIRCASE (STONE BY OTHERS)

DRAWINGS IN THIS SET:

- 54565-02 (GA)
- 54565-02 (ELEVATION & SECTIONS)
- 54565-03 (DETAILS)
- 54565-04 (AXO. RENDERING - STEEL ONLY)
- 54565-04 (AXO. RENDERING - WITH STONE CLADDING)

BASED ON SOURCE DRAWINGS:

#### MATERIALS:

##### MILD STEEL

- 12mm THK ROLLED & LASER CUT STRINGERS
- 10X22mm FLT STRINGER INFILLS
- 6mm THK LASER CUT SLOT & TAB TREAD TREADS
- 100X100X6mm SHS STRINGER SUPPORT POSTS

##### GLASS

- 12mm THK LOW IRON TOUGHENED & LAMINATED GLASS

##### FITTINGS/HARDWARE

##### FINISH:

#### LAYOUT NOTES

- In respect to all trades involved, we've used CHAHAN's layout of the flooring and panelling and only adjusted the actual stair footprint as needed.
- Kikler Projects has advised Elite Metal Group that the geometry in our stair drawings will provide/co-ordinate a general layout of the finished faces/edges only to be used by the following trades to make their design to suit. It is expected all following trades will maintain responsibility for their design.
- Elite Metal Group will advise at the earliest opportunity possible to Kikler Projects, and in turn following trades, of any dimensional deviation from the finished faces/edges represented in our drawings/3D model.
- Elite Metal group will not bare any responsibility for the effects on other trades, of any dimensional deviations of installed staircase which is within tolerances allowable according to project specification. It is strongly suggested all dimensions are confirmed on site, prior to proceeding with manufacture of any proceeding trade's work.
- The centrelines crossing the elliptical flooring pattern are as drawn by CHAHAN and have since been adopted by Kikler to co-ordinate all aspects of the alcove layout.
- The drawings with this note are draft work-in-progress drawings and as such are subject to change. All design co-ordination should be from the latest approved construction issue drawings. Please check with Kikler Projects for the latest issue drawings.

#### REVISIONS

REV.	DATE	DESCRIPTION
A	17/1/23	• SITE SURVEY ADJUSTMENTS • ADDED TREAD • UPDATED RISE
B	1/2/23	• ADDED STRUCTURAL STEEL • ADJUSTED 1ST FLOOR LANDING
C	6/2/23	• SHIFTED CENTRELINE • ADDED 1ST FLOOR TERMINATIONS

Drawings Issued For:

Fabrication

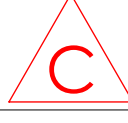
Project Name

Project Scope

Drawing Number

54565-02

(of 5 sheets)



Drawing Title

RESTAURANT STAIRCASE

ELEVATION & SECTIONS

Date

12/12/22

Drawn By

RC

Page Size

A1

Drawings generated in SolidWorks by Shoreline Parametrics

+44 (0)179 838006 (UK)

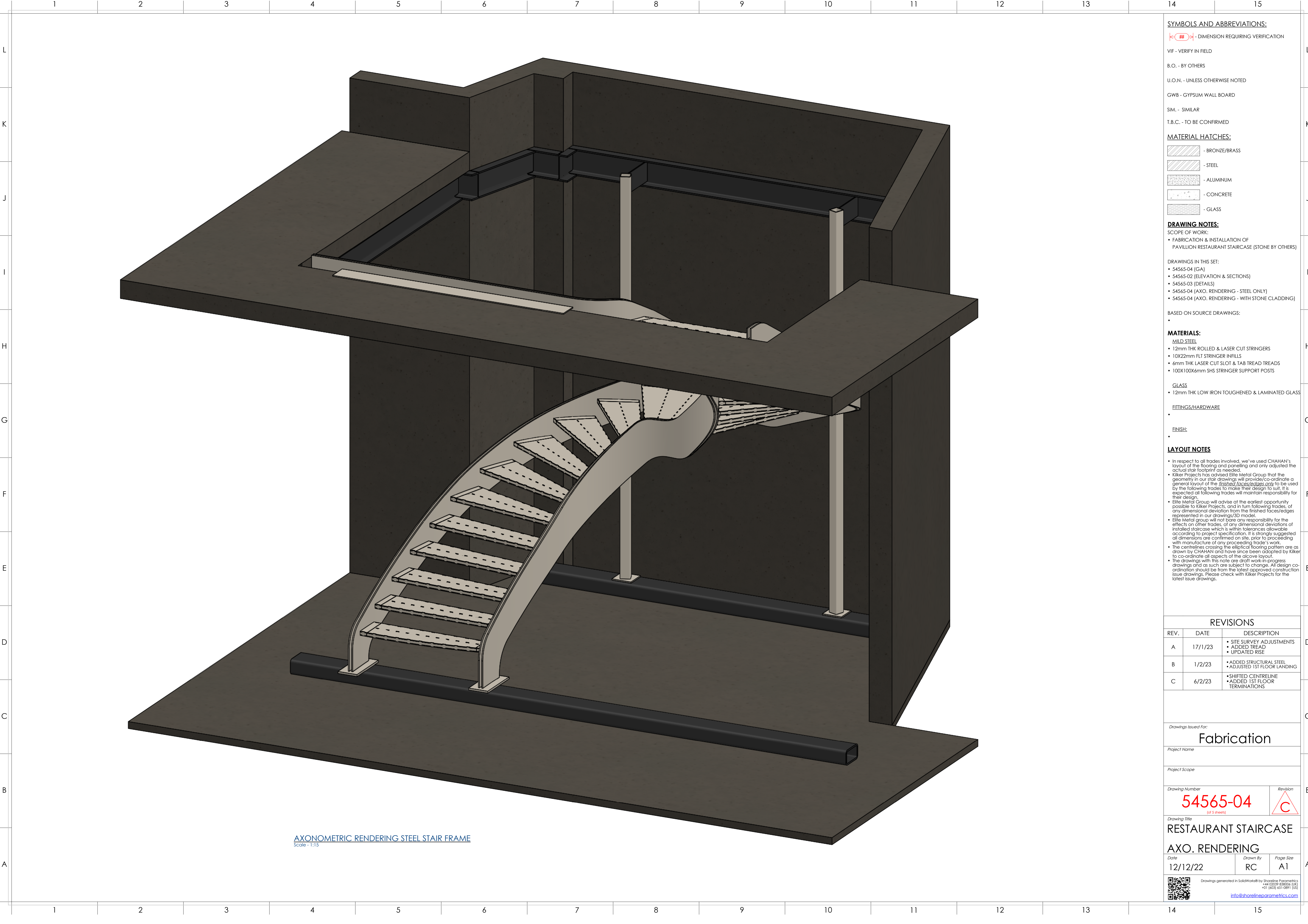
+01 (603) 651-0891 (US)

info@shorelineparametrics.com









SYMBOLS AND ABBREVIATIONS:

 - DIMENSION REQUIRING VERIFICATION

VIF - VERIFY IN FIELD

B.O. - BY OTHERS


U.O.N. - UNLESS OTHERWISE NOTED

GWB - GYPSUM WALL BOARD

SIM. - SIMILAR

T.B.C. - TO BE CONFIRMED

MATERIAL HATCHES:

 - BRONZE/BRASS

 - STEEL

 - ALUMINUM

 - CONCRETE

 - GLASS

DRAWING NOTES:

SCOPE OF WORK:  
• FABRICATION & INSTALLATION OF  
PAVILLION RESTAURANT STAIRCASE (STONE BY OTHERS)

DRAWINGS IN THIS SET:  
• 54565-04 (GA)  
• 54565-02 (ELEVATION & SECTIONS)  
• 54565-03 (DETAILS)  
• 54565-04 (AXO. RENDERING - STEEL ONLY)  
• 54565-04 (AXO. RENDERING - WITH STONE CLADDING)

BASED ON SOURCE DRAWINGS:  
•

MATERIALS:

MILD STEEL  
• 12mm THK ROLLED & LASER CUT STRINGERS  
• 10X22mm FLT STRINGER INFILLS  
• 6mm THK LASER CUT SLOT & TAB TREAD TREADS  
• 100X100X6mm SHS STRINGER SUPPORT POSTS

GLASS  
• 12mm THK LOW IRON TOUGHENED & LAMINATED GLASS

FITTINGS/HARDWARE  
•

FINISH:  
•

LAYOUT NOTES

- In respect to all trades involved, we've used CHAHAN's layout of the flooring and panelling and only adjusted the actual stair footprint as needed.
- Kiker Projects has advised Elite Metal Group that the geometry in our stair drawings will provide/co-ordinate a general layout of the *finished faces/edges only* to be used by the following trades to make their design to suit. It is expected all following trades will maintain responsibility for their design.
- Elite Metal Group will advise at the earliest opportunity possible to Kiker Projects, and in turn following trades, of any dimensional deviation from the finished faces/edges represented in our drawings/3D model.
- Elite Metal group will not bare any responsibility for the effects on other trades, of any dimensional deviations of installed staircase which is within tolerances allowable according to project specification. It is strongly suggested all dimensions are confirmed on site, prior to proceeding with manufacture of any proceeding trade's work.
- The centrelines crossing the elliptical flooring pattern are as drawn by CHAHAN and have since been adopted by Kiker to co-ordinate all aspects of the alcove layout.
- The drawings with this note are draft work-in-progress drawings and as such are subject to change. All design co-ordination should be from the latest approved construction issue drawings. Please check with Kiker Projects for the latest issue drawings.

REVISIONS

REV.	DATE	DESCRIPTION
A	17/1/23	• SITE SURVEY ADJUSTMENTS • ADDED TREAD • UPDATED RISE
B	1/2/23	• ADDED STRUCTURAL STEEL • ADJUSTED 1ST FLOOR LANDING
C	6/2/23	• SHIFTED CENTRELINE • ADDED 1ST FLOOR TERMINATIONS

Drawings Issued For:

Fabrication

Project Name

Project Scope

Drawing Number

54565-04  
(of 5 sheets)

Revision

C

Drawing Title

RESTAURANT STAIRCASE

AXO. RENDERING

Date

12/12/22

Drawn By

RC

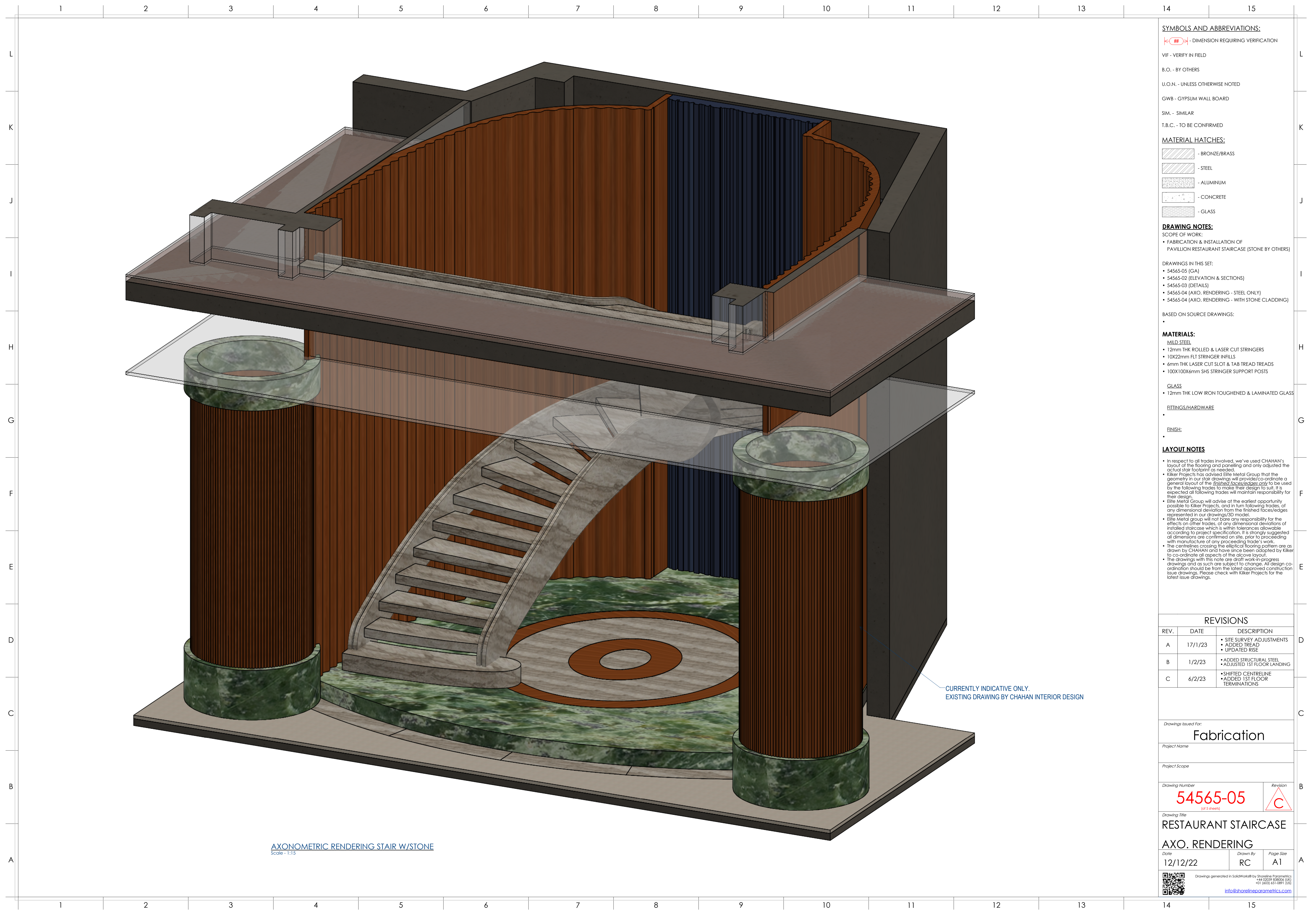
Page Size

A1



Drawings generated in SolidWorks® by Shoreline Parametrics  
+44 (0)179 838006 (UK)  
+01 (603) 651-0891 (US)  
[info@shorelineparametrics.com](mailto:info@shorelineparametrics.com)





SYMBOLS AND ABBREVIATIONS:

 - DIMENSION REQUIRING VERIFICATION

VIF - VERIFY IN FIELD

B.O. - BY OTHERS

U.O.N. - UNLESS OTHERWISE NOTED

GWB - GYPSUM WALL BOARD

SIM. - SIMILAR

T.B.C. - TO BE CONFIRMED

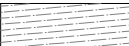
MATERIAL HATCHES:

 - BRONZE/BRASS

 - STEEL

 - ALUMINUM

 - CONCRETE

 - GLASS

DRAWING NOTES:

SCOPE OF WORK:  
• FABRICATION & INSTALLATION OF  
PAVILLION RESTAURANT STAIRCASE (STONE BY OTHERS)

DRAWINGS IN THIS SET:  
• 54565-05 (GA)  
• 54565-02 (ELEVATION & SECTIONS)  
• 54565-03 (DETAILS)  
• 54565-04 (AXO. RENDERING - STEEL ONLY)  
• 54565-04 (AXO. RENDERING - WITH STONE CLADDING)

BASED ON SOURCE DRAWINGS:

•

MATERIALS:

MILD STEEL  
• 12mm THK ROLLED & LASER CUT STRINGERS  
• 10X22mm FLT STRINGER INFILLS  
• 6mm THK LASER CUT SLOT & TAB TREAD TREADS  
• 100X100X6mm SHS STRINGER SUPPORT POSTS

GLASS  
• 12mm THK LOW IRON TOUGHENED & LAMINATED GLASS

FITTINGS/HARDWARE

•

FINISH:

•

LAYOUT NOTES

• In respect to all trades involved, we've used CHAHAN's layout of the flooring and panelling and only adjusted the actual stair footprint as needed.  
• Kiker Projects has advised Elite Metal Group that the geometry in our stair drawings will provide/co-ordinate a general layout of the finished faces/edges only to be used by the following trades to make their design to suit. It is expected all following trades will maintain responsibility for their design.  
• Elite Metal Group will advise at the earliest opportunity possible to Kiker Projects, and in turn following trades, of any dimensional deviation from the finished faces/edges represented in our drawings/3D model.  
• Elite Metal group will not bare any responsibility for the effects on other trades, of any dimensional deviations of installed staircase which is within tolerances allowable according to project specification. It is strongly suggested all dimensions are confirmed on site, prior to proceeding with manufacture of any proceeding trade's work.  
• The centrelines crossing the elliptical flooring pattern are as drawn by CHAHAN and have since been adopted by Kiker to co-ordinate all aspects of the alcove layout.  
• The drawings with this note are draft work-in-progress drawings and as such are subject to change. All design co-ordination should be from the latest approved construction issue drawings. Please check with Kiker Projects for the latest issue drawings.

REVISIONS

REV.	DATE	DESCRIPTION
A	17/1/23	• SITE SURVEY ADJUSTMENTS • ADDED TREAD • UPDATED RISE
B	1/2/23	• ADDED STRUCTURAL STEEL • ADJUSTED 1ST FLOOR LANDING
C	6/2/23	• SHIFTED CENTRELINE • ADDED 1ST FLOOR TERMINATIONS

Drawings Issued For:

Fabrication

Project Name

Project Scope

Drawing Number

54565-05

(of 5 sheets)

Revision



Drawing Title

RESTAURANT STAIRCASE

AXO. RENDERING

Date

12/12/22

Drawn By

RC

Page Size

A1



Drawings generated in SolidWorks® by Shoreline Parametrics

+44 (0)179 838006 (UK)  
+01 (603) 651-0891 (US)

info@shorelineparametrics.com

AXONOMETRIC RENDERING STAIR W/STONE  
Scale - 1:15

CURRENTLY INDICATIVE ONLY.  
EXISTING DRAWING BY CHAHAN INTERIOR DESIGN