



Perspective - Side
Scale - n/a

Perspective - Front
Scale - n/a

SYMBOLS AND ABBREVIATIONS:

⬅️(##)➡️ - CRITICAL FURNISHED DIMENSION

VIF - VERIFY IN FIELD

B.O. - BY OTHERS

U.O.N. - UNLESS OTHERWISE NOTED

GWB - GYPSUM WALL BOARD

SIM. - SIMILAR

T.B.C. - TO BE CONFIRMED

MATERIAL HATCHES:

- BRONZE/BRASS
- GLASS
- PLYWOOD
- MDF
- WOOD
- BUILDING

DRAWING NOTES:

THESE DRAWINGS ARE FOR THE GENERAL FABRICATION AND INSTALLATION OF THE CABINETS SHOWN. THESE DRAWINGS ARE MODELLED TO .001" HOWEVER BECAUSE THEIR PRIMARY USE IS FOR THE CONSTRUCTION TRADE(S), ALL DIMENSIONS ARE ROUNDED TO THE NEAREST 1/32". PLEASE REFER TO PART AND SUBASSEMBLY DRAWINGS FOR FURTHER DETAILS 7" DIMENSIONS.

SCOPE OF WORK:

- Fabrication & Installation of cabinetry as shown

DRAWINGS IN THIS SET:

- 2276-00 (General Arrangement)
- 2276-01 (Elevations, Plan & Vertical Sections)
- 2276-02 (Detail - Plan Sections)
- 2276-03 (Detail - Vertical Sections)

BASED ON SOURCE DRAWINGS:

-

MATERIALS:

BRASS & GLASS CABINETS

- Cabinet & Door Frames - Brass
- Exposed Cabinet Interiors - 32ga. Brass Sheet
- Substrate - 3/4" EuroPly Multi-Ham Plywood
- Laminate Backer - 32ga. Aluminum
- Door Glass - 1/8" Tempered Low-Iron
- Glass Shelves - 3/8" Tempered Low-Iron

DRAWER CABINET

- Carcass - Edgebanded Walnut Veneer on 3/4" MDF (Veneer Cut T.B.D.)
- Drawer Sides & Ends - Maple
- Drawer Bottoms - Maple Plywood

FITTINGS/HARDWARE:

- Hinges - BRUSCO L97
- Drawer Runners - BLUM Movento 450mm Full Extension
- Exposed Fasteners - Brass (heads/sizes as indicated)
- Pulls - Custom 5/16"x1" Brass Bar (lengths as indicated)

FINISH:

- Brass - Dark Antique & Wax (To match approved sample)
- Walnut - Natural /Catalyzed Oil Finish (To match approved sample)

Revisions		
REV.	DATE	DESCRIPTION
A	16/9/20	Align Cabinet Break With T.O. Window
B	16/12/20	Fabrication Set • Added Lighting Details

BLU BLK	BLUBLK, LLC 22 Bates Road Suite 246 Mashpee, MA 02649
------------	-------------------------------------------------------------

Drawings Issued For:

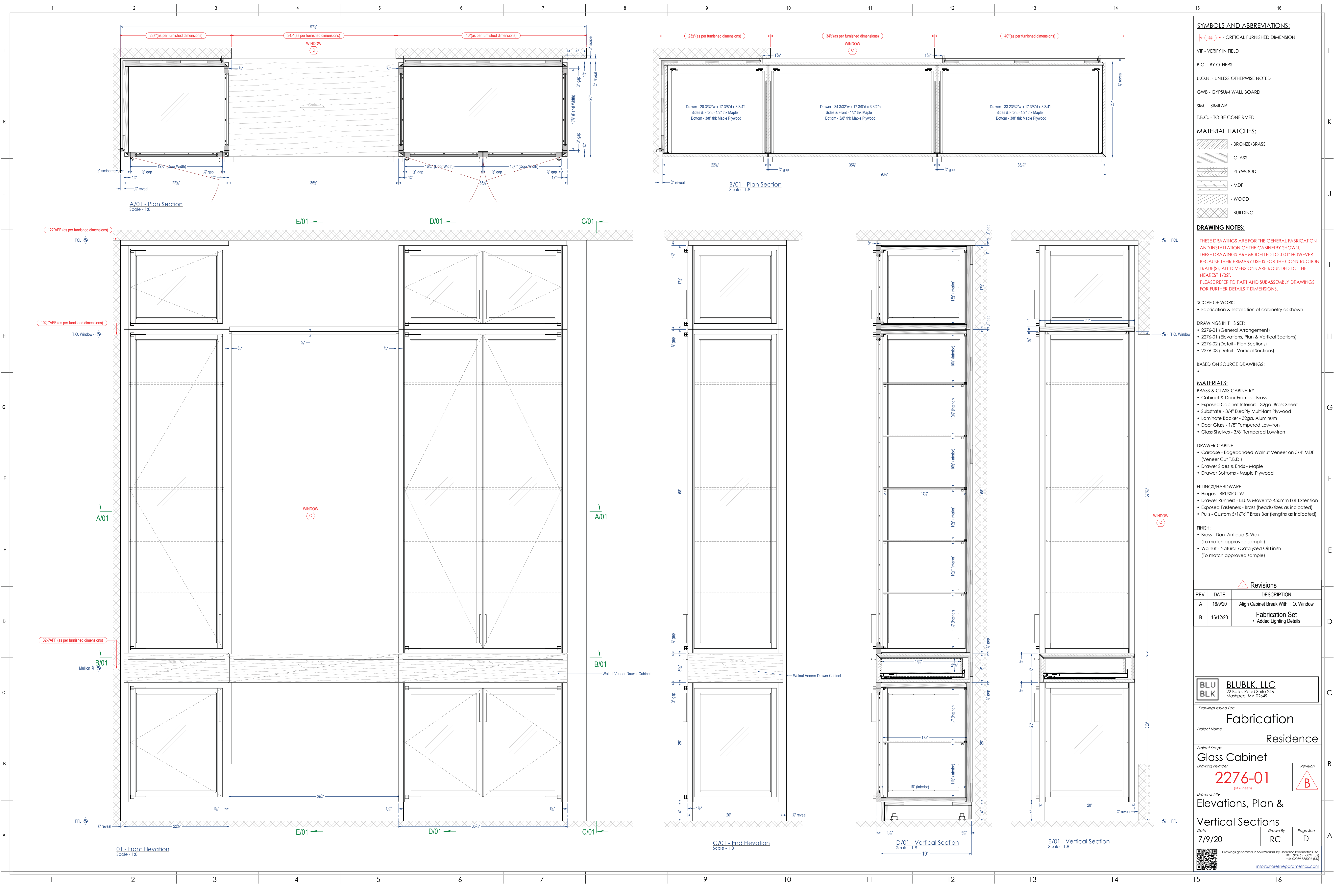
Fabrication	
Residence	

Project Scope	
Glass Cabinet	
Drawing Number	Revision
2276-00 (of 4 sheets)	B

Drawing Title	
General Arrangement	
Perspective Renderings	

Date	Drawn By	Page Size
7/9/20	RC	D

QR Code	Drawings generated in SolidWorks® by Shoreline Parametrics Ltd. +41 1803 651-0891 (US) +44 (0)209 838006 (UK) info@shorelineparametrics.com
---------	------------------------------------------------------------------------------------------------------------------------------------------------------



SYMBOLS AND ABBREVIATIONS:

- CRITICAL FURNISHED DIMENSION

VIF - VERIFY IN FIELD

B.O. - BY OTHERS

U.O.N. - UNLESS OTHERWISE NOTED

GWB - GYPSUM WALL BOARD

SIM. - SIMILAR

T.B.C. - TO BE CONFIRMED

MATERIAL HATCHES:

- BRONZE/BRASS
- GLASS
- PLYWOOD
- MDF
- WOOD
- BUILDING

DRAWING NOTES:

THESE DRAWINGS ARE FOR THE GENERAL FABRICATION AND INSTALLATION OF THE CABINETS SHOWN. THESE DRAWINGS ARE MODELLED TO .001" HOWEVER BECAUSE THEIR PRIMARY USE IS FOR THE CONSTRUCTION TRADE(S), ALL DIMENSIONS ARE ROUNDED TO THE NEAREST 1/32". PLEASE REFER TO PART AND SUBASSEMBLY DRAWINGS FOR FURTHER DETAILS 7 DIMENSIONS.

SCOPE OF WORK:

- Fabrication & Installation of cabinetry as shown

DRAWINGS IN THIS SET:

- 2276-01 (General Arrangement)
- 2276-01 (Elevations, Plan & Vertical Sections)
- 2276-02 (Detail - Plan Sections)
- 2276-03 (Detail - Vertical Sections)

BASED ON SOURCE DRAWINGS:

- BRASS & GLASS CABINETS
- Cabinet & Door Frames - Brass
- Exposed Cabinet Interiors - 32ga. Brass Sheet
- Substrate - 3/4" EuroPly Multi-Ham Plywood
- Laminate Backer - 32ga. Aluminum
- Door Glass - 1/8" Tempered Low-Iron
- Glass Shelves - 3/8" Tempered Low-Iron

DRAWER CABINET

- Carcase - Edgebanded Walnut Veneer on 3/4" MDF (Veneer Cut T.B.D.)
- Drawer Sides & Ends - Maple
- Drawer Bottoms - Maple Plywood

FITTINGS/HARDWARE:

- Hinges - BRUSSO L97
- Drawer Runners - BLUM Movento 450mm Full Extension
- Exposed Fasteners - Brass (heads/sizes as indicated)
- Pulls - Custom 5/16"x1" Brass Bar (lengths as indicated)

FINISH:

- Brass - Dark Antique & Wax (To match approved sample)
- Walnut - Natural /Catalyzed Oil Finish (To match approved sample)

Revisions

REV.	DATE	DESCRIPTION
A	16/9/20	Align Cabinet Break With T.O. Window
B	16/12/20	Fabrication Set • Added Lighting Details

BLU BLK BLUBLK, LLC
22 Bates Road Suite 246
Mashpee, MA 02649

Drawings Issued For:

Fabrication

Project Name

Residence

Project Scope

Glass Cabinet

Drawing Number

2276-01

(of 4 sheets)

Revision

B

Drawing Title

Elevations, Plan &

Vertical Sections

Date

7/9/20

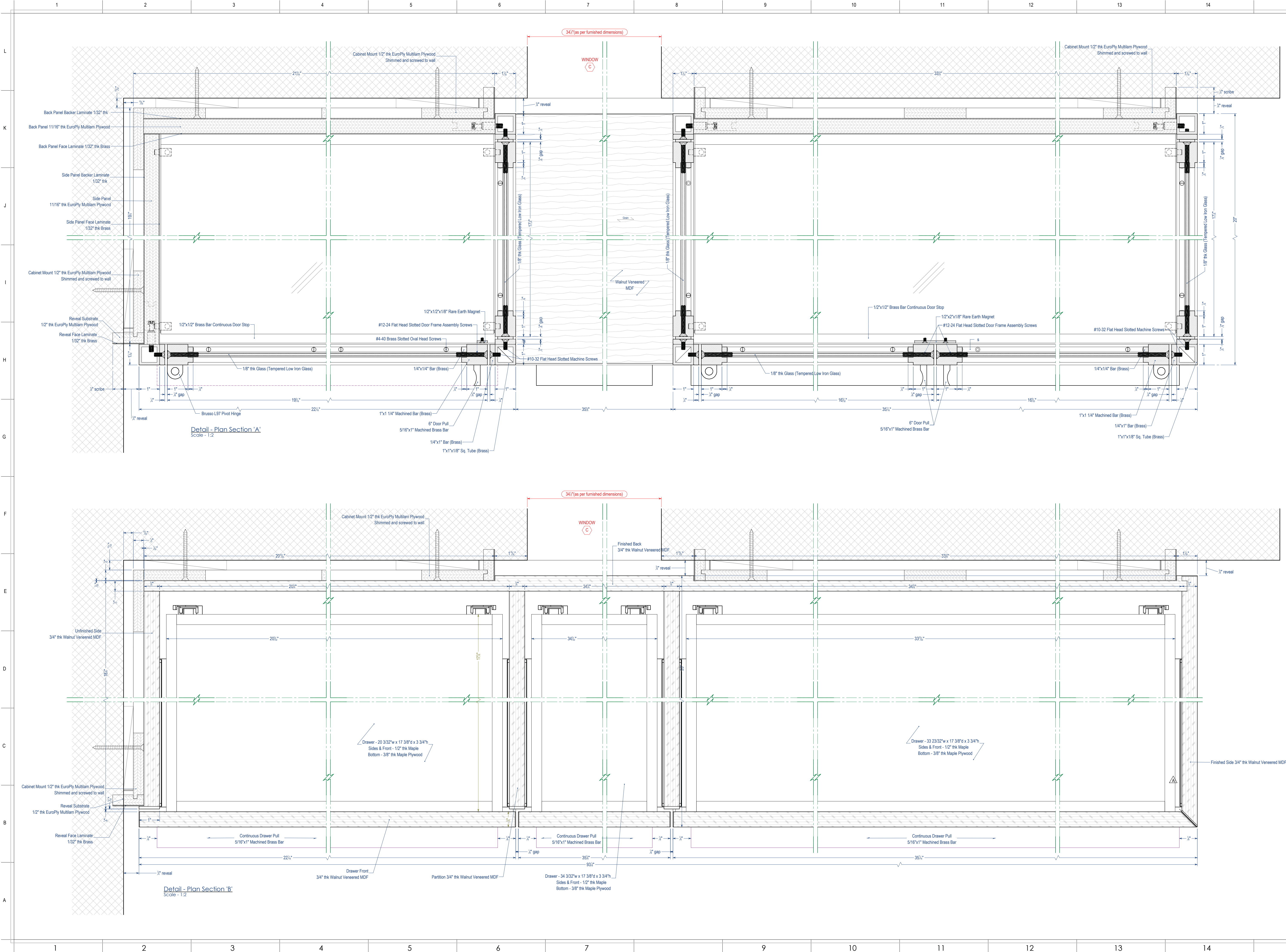
Drawn By

RC

Page Size

D

Drawings generated in SolidWorks by Shoreline Parametrics Ltd.
+41 863 651 091 (US)
+44 (0)209 88006 (UK)
info@shorelineparametrics.com



SYMBOLS AND ABBREVIATIONS:

- CRITICAL FURNISHED DIMENSION
- VIF - VERIFY IN FIELD
- B.O. - BY OTHERS
- U.O.N. - UNLESS OTHERWISE NOTED
- GWB - GYPSUM WALL BOARD
- SIM. - SIMILAR
- T.B.C. - TO BE CONFIRMED

MATERIAL HATCHES:

- BRONZE/BRASS
- GLASS
- PLYWOOD
- MDF
- WOOD
- BUILDING

DRAWING NOTES:

THESE DRAWINGS ARE FOR THE GENERAL FABRICATION AND INSTALLATION OF THE CABINETS SHOWN. THESE DRAWINGS ARE MODELLED TO .001" HOWEVER BECAUSE THEIR PRIMARY USE IS FOR THE CONSTRUCTION TRADE(S), ALL DIMENSIONS ARE ROUNDED TO THE NEAREST 1/32". PLEASE REFER TO PART AND SUBASSEMBLY DRAWINGS FOR FURTHER DETAILS 7 DIMENSIONS.

SCOPE OF WORK:

- Fabrication & Installation of cabinetry as shown

DRAWINGS IN THIS SET:

- 2276-02 (General Arrangement)
- 2276-01 (Elevations, Plan & Vertical Sections)
- 2276-02 (Detail - Plan Sections)
- 2276-03 (Detail - Vertical Sections)

BASED ON SOURCE DRAWINGS:

-

MATERIALS:

- BRASS & GLASS CABINETS
- Cabinet & Door Frames - Brass
- Exposed Cabinet Interiors - 32ga. Brass Sheet
- Substrate - 3/4" EuroPly Multi-Ham Plywood
- Laminate Backer - 32ga. Aluminum
- Door Glass - 1/8" Tempered Low-Iron
- Glass Shelves - 3/8" Tempered Low-Iron

DRAWER CABINET

- Carcase - Edgebanded Walnut Veneer on 3/4" MDF (Veneer Cut T.B.D.)
- Drawer Sides & Ends - Maple
- Drawer Bottoms - Maple Plywood

FITTINGS/HARDWARE:

- Hinges - BRUSO L97
- Drawer Runners - BLUM Movento 450mm Full Extension
- Exposed Fasteners - Brass (heads/sizes as indicated)
- Pulls - Custom 5/16"x1" Brass Bar (lengths as indicated)

FINISH:

- Brass - Dark Antique & Wax (To match approved sample)
- Walnut - Natural /Catalyzed Oil Finish (To match approved sample)

Revisions

REV.	DATE	DESCRIPTION
A	16/9/20	Align Cabinet Break With T.O. Window
B	16/12/20	Fabrication Set • Added Lighting Details



Drawings Issued For:

Fabrication Residence

Project Name

Project Scope

Glass Cabinet

Drawing Number

2276-02

(of 4 sheets)

Drawing Title

Detail - Plan Sections

(refer to Page 01 for context)

Date

7/9/20

Drawn By

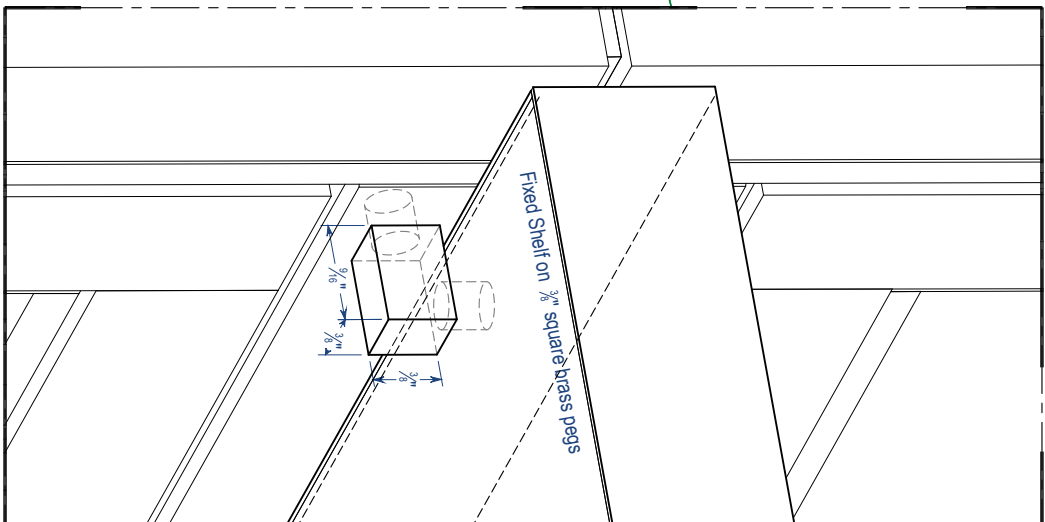
RC

Page Size

D



Drawings generated in SolidWorks by Shoreline Parametrics Ltd.
+41 803 651 0891 (US)
+44 02039 838006 (UK)
info@shorelineparametrics.com



Detail: Fixed Shelf Perspective (looking up)

Scale: 1/2"

SYMBOLS AND ABBREVIATIONS:

CRITICAL FINISHED DIMENSION

V.F. - VERIFY IN FIELD

B.O. - BY OTHERS

U.O.N. - UNLESS OTHERWISE NOTED

GWB - GIPSUM WALL BOARD

SM - SIMILAR

T.S.C. - TO BE CONFIRMED

MATERIAL HATCHES:

BROUZE/BRASS

GLASS

PL WOOD

MDF

WOOD

BUILDING

DRAWING NOTES:

THESE DRAWINGS ARE FOR THE GENERAL FABRICATION AND INSTALLATION OF THE CABINETS SHOWN. THESE DRAWINGS ARE MODELLED TO .001" HOWEVER, BECAUSE THEIR PRIMARY USER IS FOR THE CONSTRUCTION TRADES, ALL DIMENSIONS ARE ROUNDED TO THE NEAREST 1/32". PLEASE REFER TO PART AND SUBASSEMBLY DRAWINGS FOR FURTHER DETAILS 7 DIMENSIONS.

SCOPE OF WORK:

Fabrication & installation of cabinetry as shown

DRAWINGS IN THIS SET:

- 227-6-03 General Arrangement
- 227-6-01 Elevation, Front & Vertical Sections
- 227-6-02 Detail - Front Sections
- 227-6-03 Detail - Vertical Sections

BASED ON SOURCE DRAWINGS:

MATERIALS:

- BRASS & GLASS CABINERY
- Cabinet & Door Frame - Brass
- Exposed Cabinet Interiors - 3/20" Brass Sheet
- Substrate - 3/4" Eucalyptus Plywood
- Laminate Backer - 3/20" Aluminum
- Door Glass - 1/8" Tempered Low-Iron
- Glass Shelves - 3/8" Tempered Low-Iron

DOOR/CABINET:

- Carcase - Edgebonded Walnut Veneer on 3/4" MDF (Veneer Cut 1/8")
- Drawer Sides & Ends - Maple
- Drawer Bottoms - Maple Plywood
- FITTINGS/HARDWARE:
- Hinges - BRISCO 187
- Drawer Runners - BLUM Movento 459mm Full Extension
- Exposed Fasteners - Brass (heads/sizes as indicated)
- Pigs - Custom 5/16" x 1" Brass Bar (lengths as indicated)

FINISH:

- Brass - Dark Antique & Wax (to match approved sample)
- Walnut - Natural (Colorized Oil finish to match approved sample)

Revisions

REV.	DATE	DESCRIPTION
A	16/9/20	Align Cabinet Break With T.O. Window
B	16/12/20	Fabrication Set • Added lighting details

BLU

BLK

BLUBUK LLC

22 Bruce Road Suite 246

Westport, NY 10297

Project Name

Residence

Project Scope

Glass Cabinet

Drawing Number

2276-03

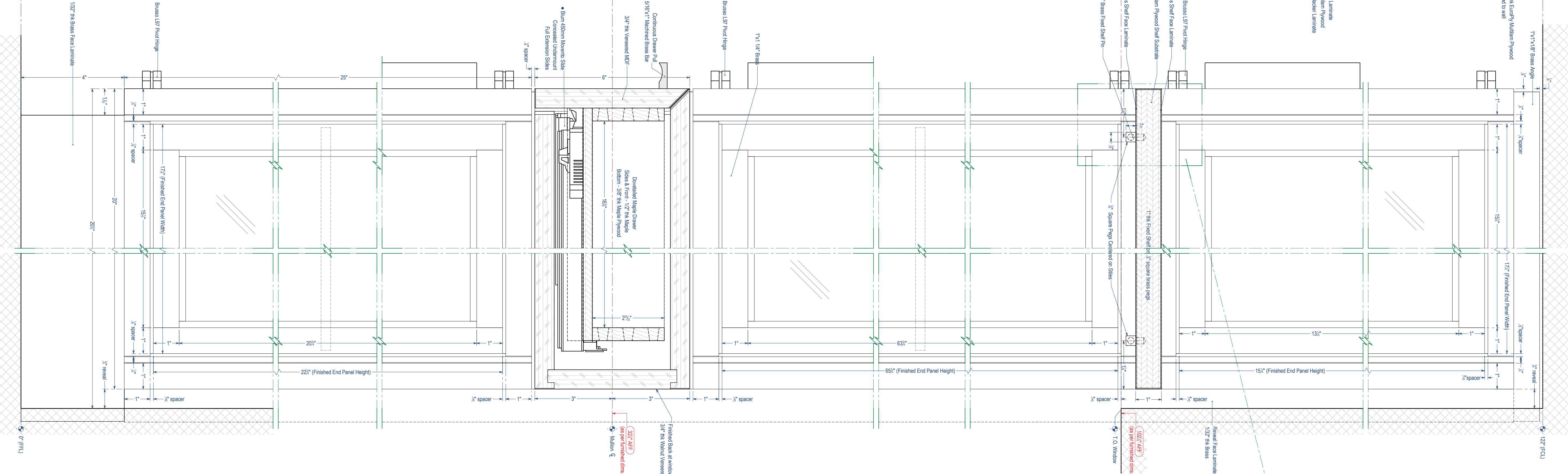
Revision

B

Detail - Vertical Sections

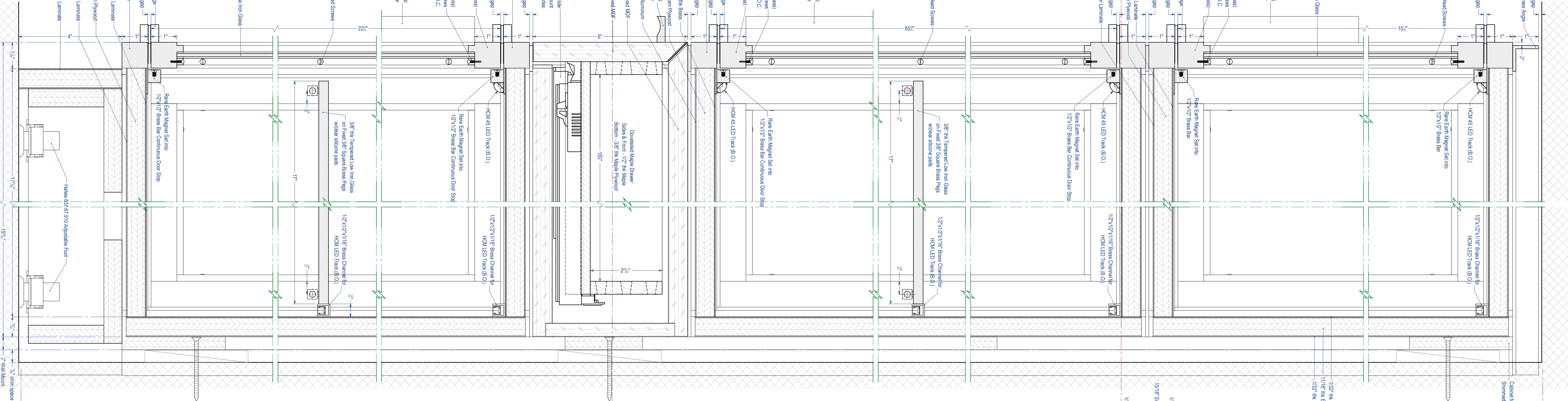
(refer to Page 01 for context)

Date	Drawn By	Page Size
7/9/20	RC	D



Detail: Vertical Section E'

Scale: 1/2"



Detail: Vertical Section D'

Scale: 1/2"